

FSU

WELCOME

2024 Postdoctoral Fall Symposium

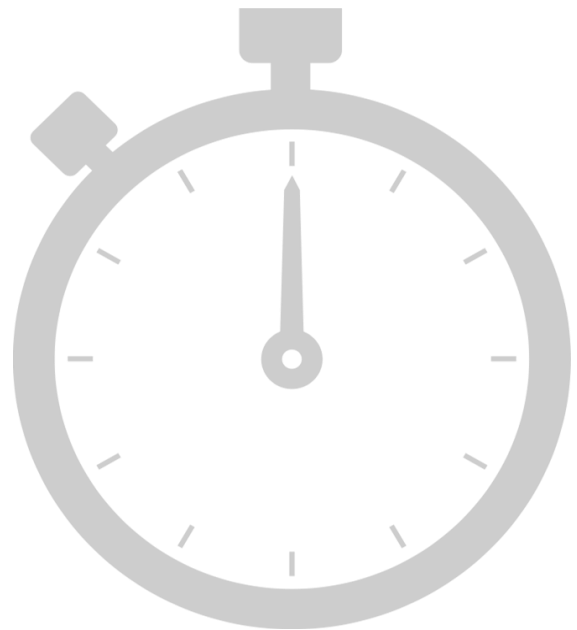
The Office of Postdoctoral Affairs

The Graduate School | Florida State University

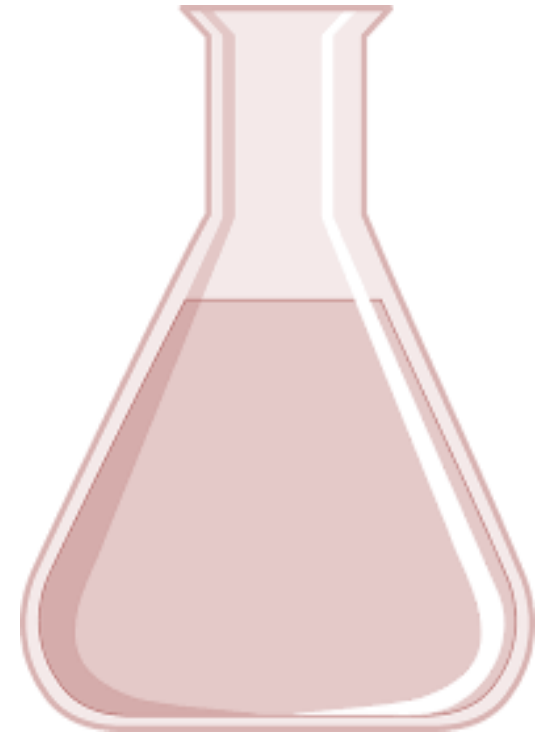
FSU

The Office of Postdoctoral Affairs

Presents:



**FIVE
MINUTE
RESEARCH**
POSTDOC COMPETITION



Florida State University

THANK YOU TEAM!

Srivalli Dorasetty
Application Developer, Designer

Francis Ebuara
Graduate Assistant - Office of Postdoctoral Affairs

Jakub Hruby
Postdoctoral Scholar MagLab

Keith McCall
Acting Director Office of Graduate Awards & Fellowships

Audrey Livingston
Graduate Enrollment Specialist

Thais Pedrete
*Postdoctoral Scholar in Chemistry
Past Senior Advisor*

Joy Stein
Event Administrative Specialist

Diana Paquette
College of Medicine Coordinator

Geoset Studios!
Kyle Wilson

Postdoctoral Association Leadership Team! - *Olivia Cook (President), Kasey Longley (Vice President), Betsy Mansfield (Senior Advisor), Luna Hiron (Past Senior Advisor), and Mohammad Nooranidoost (Past Senior Advisor)*

THANK YOU JUDGES!

Gloria Covin
FSU Librarian Emeritus

Jenn Garye
*Director of Business Operations,
VP for Research Office*

Karema Harris
*President & CEO Foreign Affairs Center,
Global Business Consultant*

Renaine Julian
Director of STEM Libraries

William Hill
*Director, Laboratory Animal Resources and
Attending Veterinarian*

Beth Hodges
Director of Research Development

Anna Prentiss
Assistant Director News & Web Content

Pamela Ray
Senior Director Sponsored Research Administration

Mark Riley
*Dean of the Graduate School & Robert Lawton
Professor of Physics*

Jennifer Winegardner
*RW Law Firm
Civil Litigator*

Kasey Longley

College of Social Work

*Caring for Grandparent Caregivers: Identifying Support
Needs for Older Adults Raising their Grandchildren*

The Office of Postdoctoral Affairs

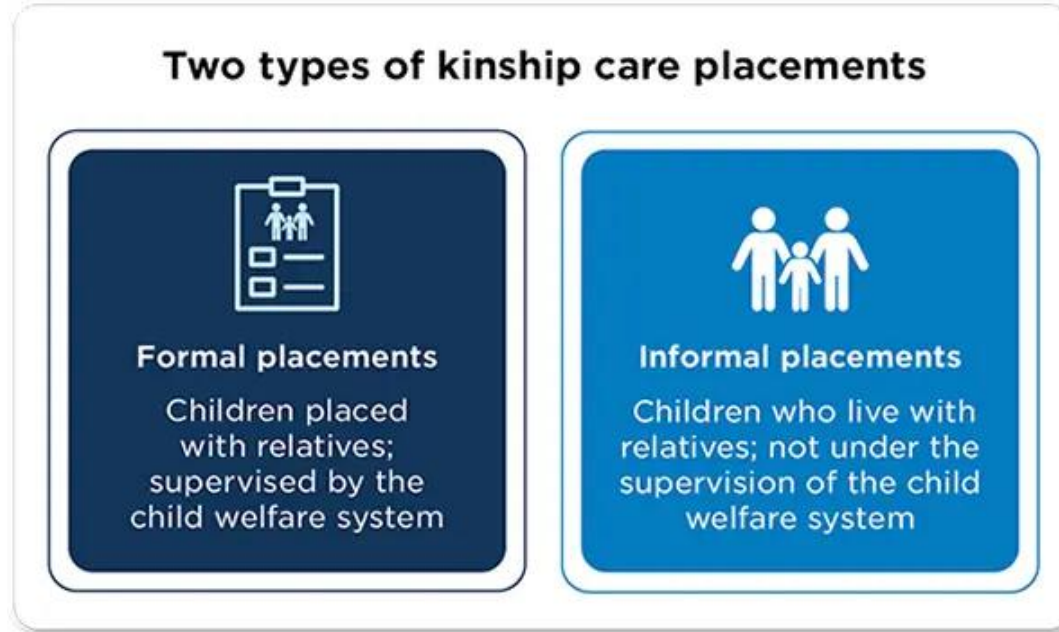
The Graduate School | Florida State University



State of Grandfamilies (2020). Facing a Pandemic: Grandfamilies Living Together During COVID-19 and Thriving Beyond. Generations United.



Formal/Informal



More than 70% of kinship care placements are informal

Formal Support:

- Assistance from government-run social services
- Help from child welfare agencies
- Healthcare services

Informal Support:

- Come from personal relationships and community networks
- Emotional support
- Car rides
- Financial support from friends and family
- Church groups
- Peer support from other caregivers

Washington, T., & Mihalec-Adkins, B. P. (2023). Kinship care supports the academic performance of children. Child Trends.

Chronic Illness

10 Common Chronic Conditions for Adults 65+



Hypertension
(High Blood Pressure)
60%



High Cholesterol
51%



Obesity
42%



Arthritis
35%



Ischemic /
Coronary
Heart Disease
29%



Diabetes
27%



Chronic Kidney
Disease
25%



Heart
Failure
15%



Depression
16%



Alzheimer's
Disease and
Dementia
12%

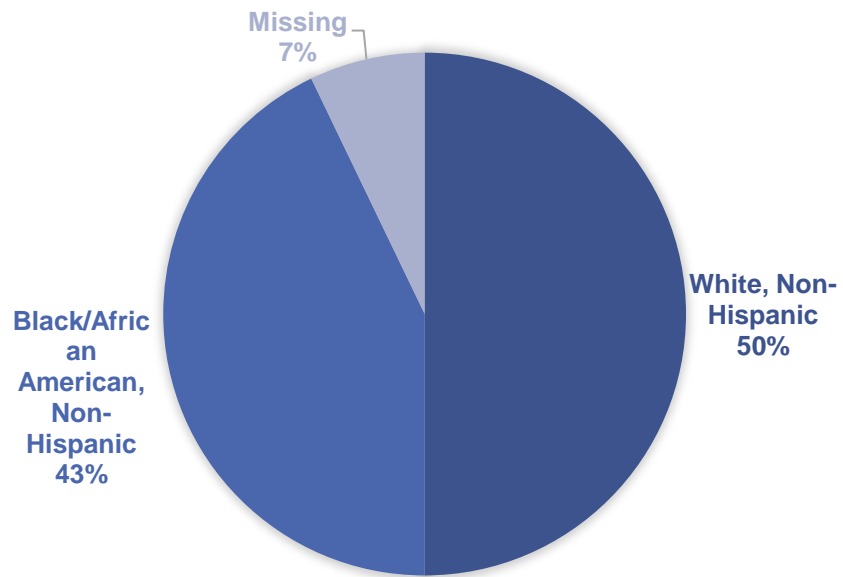
Source: Centers for Medicare & Medicaid Services, Chronic Conditions Prevalence State/County Table: All Fee-for-Service Beneficiaries.
Centers for Disease Control and Prevention. Adult Obesity Facts.

“In the past 12 months, have you experienced or been treated for any of the following. . .”

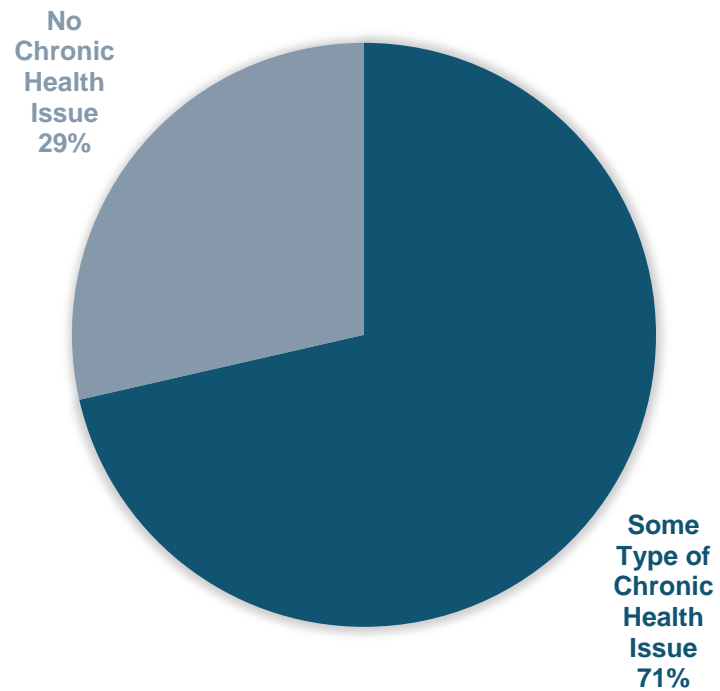
- ☐ Osteoporosis
- ☐ Hypertension
- ☐ Heart condition
- ☐ Cancer
- ☐ Diabetes
- ☐ Stroke
- ☐ Lung conditions such as asthma or emphysema
- ☐ Other

Results

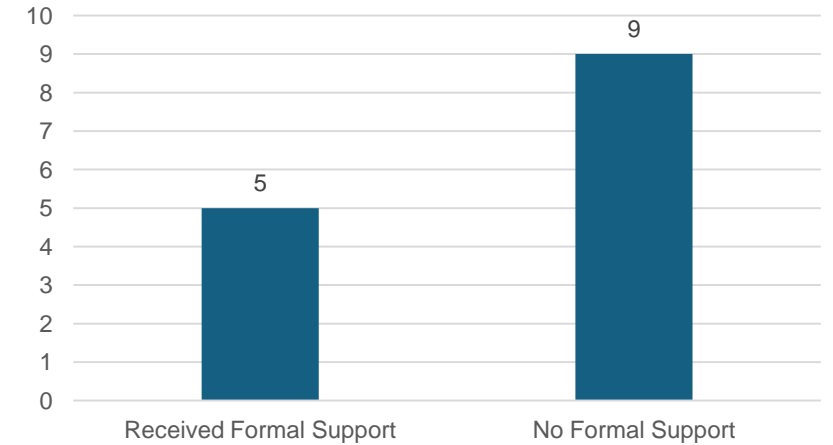
**RACIAL AND ETHNIC
DISTRIBUTION OF KINSHIP
CAREGIVERS**



CHRONIC HEALTH ISSUES



**RECEIPT OF FORMAL
SUPPORT**



Acknowledgements



Jing Wang
Dean and Professor
PhD, MPH, RN, FAAN



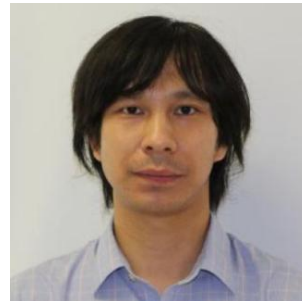
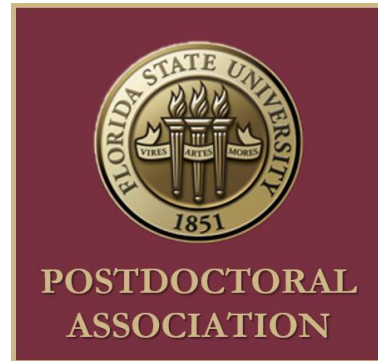
Hye Jin Park
Associate Professor
PhD, RN



Hongyu Miao
Professor, Director of Brain
Science & Symptom
Management Center
PhD



Dan Song
Postdoctoral Scholar
RN, PhD



Chengdong Li
Data Scientist



Buna Bhandari
Postdoctoral Scholar
MPH, PhD



Setor Kofi Sorkpor
Assistant Professor
PhD, MPH, MSN, RN



Brittany Lane
Postdoctoral Scholar
PhD, MPH

FSU

PEOPLE'S CHOICE AWARD

**Vote for your favorite
presentation!**

The Office of Postdoctoral Affairs

The Graduate School | Florida State University

PEOPLE'S CHOICE AWARD

**To Vote = Scan the QR Code and Then
Click Your Favorite Number!**



1 – Ahinsa Ranaweera

The HIV Capsid: A Promising Target for Anti-HIV...

2 – Behrouz Ghazi Esfahani

SPOT-RASTR: A Novel Method To Prepare CRYO-EM Samples

3 – Herschel Chawdhry

Particle Physics and the Quest for High Precision

4 – Kasey Longley

Caring for Grandparent Caregivers: Identifying Support Needs for Older Adults Raising their Grandchildren

5 – Katherine Odeggaard

A Matter of Taste: Unveiling the “New” Region in Taste Processing

6 - Li Guo

How Does Overnutrition Lead to Diabetes?

7 - Pearl Rivers Key

Mate Choice Under the Sea: Exploring the Genetic Blueprint of Reproduction in Sea Urchins

8 – Shannon Griffin

Engineering Superconducting Magnets via Structural Simulations

9 – Stephen Yuwono

How Electrons Dance When Things Go Heavy and Fast

10 – Yijiong Yang

Addressing ADRD and COVID-19 Vaccination Hesitancy: Strategies for Enhancing Health Outcomes

FSU

AWARDS & RECEPTION

**Please join us for refreshments
and award presentations**

The Office of Postdoctoral Affairs

The Graduate School | Florida State University

FSU

PROGRAM END

2024 Postdoctoral Fall Symposium

The Office of Postdoctoral Affairs

The Graduate School | Florida State University