



FLORIDA STATE UNIVERSITY
OFFICE OF POSTDOCTORAL AFFAIRS
WEEKLY DIGEST

February 19, 2020

FSU POSTDOCTORAL SPRING EVENT – MAY 8TH

SAVE THE DATE!!

The Postdoctoral Association is currently planning the **Spring Event**, which will take place on **Friday May 8th from 1-5 pm**. The event will be focused on the job application process and will include a session of **mock interviews**. In order to improve our planning we want to have a rough estimate of the number of **attendees per field and which career path are you interested in**. Also, we are looking for postdocs who could **volunteer as candidates** for mock interviews. If you are interested in this opportunity please follow this link <https://forms.gle/7juu2CohPowNyQM87> and take a survey in order to let us know what is your area of interest and if you want to volunteer.

Thank you for your time, and we hope to see you at the **next Postdoc Social Thursday Feb. 27th from 7pm**, see the FB event <https://www.facebook.com/events/1013082012393379/>

Best,

Gema Hernan, Katy Sparrow, and Lorenzo Ruffani
PDA President, Vice-President, and Spring Event Organizer

ANNOUNCING NEW PAID TIME OFF FOR POSTDOCTORAL SCHOLARS

Starting with you March 6th paycheck, postdocs will start accruing paid time off (PTO) at a rate of 4 hours per pay period. As an employee in this classification, you will become leave eligible effective March 6, 2020, and your first leave accrual will be credited at the conclusion of the pay period. PTO can be applied to any type of leave including sick, vacation, taking care of a family member, or parental. Postdocs will accrue leave up to 104 hours (13 days), after which they will no longer accrue until they take leave. There is no terminal leave.

The Office of Human Resources will host informational session to provide an overview of the policy and time entry processes. Sessions will be held at the Training Center on the following dates and times:

COAL02-0001: Wednesday, March 11, 11:00 a.m. – 12:00 p.m., Room 209

COAL02-0002: Tuesday, March 24, 4:00 p.m. – 5:00 p.m., Room 205 & 209

To register, log into [myFSU](https://myfsu.com) and navigate to: Employee Self Service > Learning and Development > Request Training Enrollment. Follow the prompts to search and submit your request.

For more information regarding PTO, please see the OPDA website under policies and hiring.

FSU POSTDOCTORAL ASSOCIATION BUDDY PROGRAM

[Become a Buddy!](#)

Are you interested in helping new postdocs settle in at FSU? The **Postdoctoral Association** is looking for current FSU postdocs to volunteer to become a Postdoc Buddy.

Don't worry – it is not a large time commitment and can really help a new scholar adjust to their new academic community! Postdoc Buddies will be paired with an incoming postdoc to help answer a few questions before their arrival concerning life in Tallahassee and what it's like to work at FSU. Once the new postdoc arrives, you may show them where to grab a bite or where to find the best hiking trails! It is up to you and your buddy how much to be in contact – from a few emails, to skype calls, to meetings in person. It is a nice way to experience being an academic mentor. If you're interested in becoming a Postdoc Buddy to help future FSU postdocs settle in, sign up [here!](#) You will be notified by the President of the PDA as to your matched buddy.

PROVOST POSTDOCTORAL FELLOWSHIP PROGRAM (PPFP)

The Office of Postdoctoral Affairs <http://opda.fsu.edu>



Provost's Postdoctoral Fellowship Program

Florida State University wants to enhance diversity of candidates seeking careers in academia. As part of these efforts, we are pleased to announce the establishment of the Provost's Postdoctoral Fellowship Program (PPFP). The goal of this program is to strengthen the academic pipeline for diverse faculty candidates by offering postdoctoral fellowships to outstanding scholars in all fields whose research, teaching, and service will contribute to faculty diversity.



The PPFP is designed to foster the development of a strong program of independent research, attainment of teaching expertise, and general preparation to successfully compete for university faculty positions. Fellows will receive intensive research mentoring and opportunities to participate in a variety of professional development activities.



Fellowships will provide nationally competitive salary and fringe for two years (with an option for a one-year extension) along with a \$20K budget for training-related expenses. Fellows will be selected based on their track record and potential synergy with a Research Mentor. If you are interested in applying, or would like more information about the program, please contact Debra Ann Fadool at dfadool@bio.fsu.edu



For more information visit:
<http://opda.fsu.edu/fellowships-and-awards/postdoctoral-fellowships-and-stipend-support/provost-postdoctoral-fellowship>



Please see full professional development for postdoctoral scholars at the FSU Office of Postdoctoral Affairs

We are pleased to announce the second year of support for The Provost Postdoctoral Fellowship Program that provides an outstanding opportunity to seek postdoctoral trainees from diverse backgrounds and individuals with a mission to increase diversity and inclusion of our postdoctoral trainees. Our long-term goal is to enhance the diversity of scholars entering faculty positions by providing a competitive and supportive postdoctoral experience as a bridge to the next career level in academia. Please read more about the PPFP program, eligibility, or to submit your application, please see this link - <https://opda.fsu.edu/fellowships-and-awards/postdoctoral-fellowships-and-stipend-support/provost-postdoctoral-fellowship>.

If you would like to update your information posted from the 2018-2020 season, you can follow the same qualtrics survey to add any new training opportunities to your current profile.

Here is the link to the current faculty profiles for your reference - <https://opda.fsu.edu/ppfp-participating-faculty-unit-listing>

Individuals interested in applying to be a **PPFP Scholar** can submit their application materials now. Review of applications will begin at the end of December and continue as a rolling admission process until all positions are filled for the 2020-2022 training period. Applicants will be notified of the status of their admission packet approximately 6 weeks following submission of their materials. Accepted PPFP Scholars can commence their training as early as May 1, 2020 but must start before December 31, 2020.

BIOLOGICAL SCIENCE/NEUROSCIENCE POSTDOCTORAL MENTORING WORKSHOP & LUNCH

KIN Life Science Building, room 2057, 12:00 – 1:00 PM, Typically the Second Monday

The theme for fall 2019/spring 2020 is '*Industry, Government and Non-profit jobs for Biologists*'

Our 2019-2020 Bio/Neuro Postdoc Workshop and Lunch series starts next week and the theme for this year is 'Industry, Government and Non-profit jobs for Biologists'.

Please mark your calendars for the fall 2019/Spring 2020 postdoc workshops. This is a special, faculty-led monthly workshop for Postdoctoral Scholars hosted by the Department of Biological Science and the Program in Neuroscience. Although the career focus will be directed to the Life Sciences, all Postdoctoral Scholars and senior Graduate Students are welcome.

Sandwiches will be served over the lunch hour during the workshops. Dates, presenters and topics are listed below. For questions, please contact Dr. [Kay Jones](#). No registration required.

Date	Presenter	Title
Mon. March 23		Oral Presentation Day – 10 am – 4 pm
Mon. April 13	TBA	TBA

THE 2020 L'ORÉAL USA FOR WOMEN IN SCIENCE FELLOWSHIP IS NOW OPEN



FOR WOMEN IN SCIENCE
IN PARTNERSHIP WITH



You could be awarded \$60,000 for research in a STEM field.

The L'ORÉAL USA for women in science fellowship program honors female scientists at a critical stage in their careers. Since 2003, we've awarded 80 postdoctoral women scientists over \$4 million in grants. We're seeking five exceptional female scientists looking to advance their research and serve as role models for the next generation of girls in STEM. Application are due January 31, 2020.

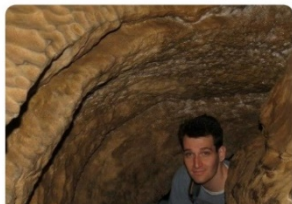
For more information, and to apply, please click [here](#).

ACCOMPLISHMENTS – ACHIEVEMENTS – RESEARCH

Postdocs, would you like help to disseminate your research, service, and mentoring achievements to a broader audience via the [@FSU Postdocs](#) Twitter account? If you have exciting new findings, just been published, received a grant or award, got hired for a new position, or have other accomplishments you would like to share for yourself or your mentees, please share them with us. Just send the content to be tweeted to Biological Science postdoc Matt Holding at mlholding@fsu.edu and it will be shared on [@FSU Postdocs](#).

← Tweet

Today's @floridastate Friday Feature Postdoc is Max Bangs from the Steppan Lab @fsubio. His PhD was @UArkansas on hybridizing desert fish, and his @FSUResearch is phylogenomics of South American rodents like this high elevation mouse featured in @NatGeo. nationalgeographic.com/animals/2019/0...



Use the following guidelines to prepare your content:

Send links to papers or websites, photos of the activity, or other material that isn't just text. Tweets get more traction if they contain content other than text alone.

Provide less than 280 characters of text for the tweet describing the activity. Include Twitter handles for your colleagues/collaborators where appropriate, if you know them, and any #hashtags to which the tweet can link. We can also retweet content you put out on our own Twitter account if you drop us a line with your Twitter handle and the specific tweet we should retweet.

CANCER CONTROL RESEARCH TRAINING PROGRAM

The University of Rochester Medical Center Cancer Control & Psychoneuroimmunology Laboratory is actively seeking outstanding candidates for their upcoming group of Fellows for 2019.

The applicants should be interested in longitudinal studies and clinical trials on translational (e.g. biomarker) symptom science research and/or cancer-related cognitive impairment research to work closely with Dr. Michelle Janelsins (Associate Professor) and her research team. Candidates they are interested in come from a variety of backgrounds including, but not limited to, neuroscience, cognitive science, clinical psychology, epidemiology, clinical trials, applied sciences, and many more.

For more information, and to apply, please click [here](#).

Materials can be sent directly to Dr. [Michelle Janelsins](#) or Dr. [Gary Morrow](#) (Program Director)

FELLOWSHIPS

[Marion Milligan Mason Award for Women in the Chemical Sciences](#)

Application deadline: March 1, 2020

[California Science and Technology Policy Fellowships](#)

Application deadline: March 1, 2020

[Helen Hay Whitney Foundation – Biomedical Research](#)

Application deadline: July 1, 2020

[Mathematical Sciences Postdoctoral Research Fellowships \(MSPRF\)](#)

Deadline: October 21, 2020

[Postdoc Research Funding Opportunities in Germany](#)

Application deadlines vary

[Index of Postdoc Fellowships in the Life Sciences \(Broad Institute\)](#)

[EPA Research Grants](#)

[EMBO Life Sciences – Short/Long Term Fellowships](#)

Intelligence Community Postdoctoral Research Fellowship Program

The Intelligence Community (IC) Postdoctoral Research Fellowship Program offers scientists and engineers from a wide variety of disciplines unique opportunities to conduct research in a wide range of topics relevant to the Intelligence Community. The research is conducted by the Postdocs, while working in partnership with a Research Advisor and collaborating with an advisor from the Intelligence Community.

In partnership with the Research Advisor, the Postdoc composes and submits a technical proposal that responds to a current research opportunity.

U.S. citizens and recent Ph.D. graduates or doctoral students who will soon complete their degrees are invited to apply.

For more information, please visit: <https://orise.orau.gov/icpostdoc/current-opportunities.html>
Application deadline is February 28, 2020.

JOBS

Below is a sampling of open positions in the United States –
Postdoctoral Positions Available -

FSU Program in Neuroscience Postdoctoral Research Position. A postdoctoral research position is open and available in the lab of Dr. Alan Spector, Department of Psychology and Neuroscience. For more information, or if interested in applying, please click [here](#) for complete information, or contact Dr. Alan Spector at: spector@psy.fsu.edu.

Looking for motivated Postdocs to research mechanisms involved in regulated remodeling of muscle T-tubule membranes in fly models of human myopathy *with funding for immediate start date!*

For more information, please click [here](#) to view flyer. Please contact Dr. Amy Kiger, Section of Cell & Development Biology University of California San Diego at akiger@ucsd.edu.

POSTDOCTORAL AND RESEARCH SCIENTIST POSITIONS

The Kaczorowski Lab at The Jackson Laboratory is seeking Postdoctoral and Research Scientist Level personnel to investigate mechanisms underlying susceptibility and resilience to normal aging and Alzheimer's disease (<https://www.neuro-central.com/2018/09/19/risk-resilience-understanding-role-genetics-alzheimers-disease/>).

Dr. Kaczorowski is an Associate Professor and the Evnin Family Endowed Chair in Alzheimer's Research at the Jackson Laboratory – a research institution specializing in genetics and genomics in order to discover solutions for disease. Projects leverage new translational mouse models, electrophysiology, circuit mapping and genome engineering to decipher how genetic and environmental factors interact to influence learning and memory abilities, cognitive aging, neurodegeneration, and Alzheimer's. Sources of support include NIH, Bright Focus, and The Glenn Foundation for Medical Research, as well as generous philanthropy awards in support of research and innovation in areas of normal aging and Alzheimer's disease.

Exceptional candidates will have the opportunity to apply for the prestigious JAX Scholar award, which supports promising early-career postdoctoral associates conducting cutting edge biomedical and basic biological research at JAX. The award includes an independent research and travel budget and a salary above our standard postdoctoral scale <https://www.jax.org/education-and-learning/pre-and-postdoctoral-program/jax-scholars>.

To apply, please submit (1) a cover letter describing past research accomplishments, research interests, and career goals, (2) a current CV, and (3) the contact information of three references to catherine.kaczorowski@jax.org

Florida College System seeks to fill a position for Executive Director, Florida Student Success Center.

The Florida Student Success Center (FSSC) serves as an intermediary between colleges, and provides greater opportunities for colleges to collaborate and learn from one another. The Executive Director works under the supervision of the Chancellor of the Florida College System. For more information on the role of the position, qualifications and to apply please, click [here](#).

Florida Conservation Corps - Opportunities

FLCC is recruiting for two exciting project areas.

The mission of the Florida Conservation Corps is to develop natural and cultural resource leaders by connecting them to areas of critical need in conservation, preservation, interpretation and resource based recreation. Click [here](#) to download flyer. For more information about FLCC, please visit their webpage at <https://www.floridastateparks.org/florida-conservation-corps>.

Ph.D. level Protein Scientist needed

QuarryBio (<https://quarrybio.com/>) is an early stage company that is developing a novel, mass spec based approach for *in vitro* measurement of membrane protein binding interactions and structure changes.

Our technology will provide a high-throughput alternative to X-ray crystallography and cryo-EM, and can be performed directly on living cells. We are relocating our lab to Tallahassee, and are seeking a Ph.D. level protein scientist to help us finish the development of this new technology and launch commercially.

Essential Skills: Chemical modification of proteins, strong understanding of binding kinetics, sample preparation and LC/MS/MS analysis of proteins (buffer exchange, affinity purification, reduction/alkylation, and proteolysis).

Analysis of bottom-up mass spec data analysis with proteomic search engines. Experience with a variety of basic techniques to assess protein integrity, oligomeric/aggregation state and binding interactions. Mammalian cell culture techniques with an emphasis on plasmid construction, transfection, protein expression/purification, and extraction of proteins from cellular membranes. Adherent and suspension cell culture methods. Ability to work in a fast-paced team-oriented environment.

Helpful skills: SDS-PAGE, SPR, DLS, CD, IF, DSC/DSF, and SEC HPLC analysis. Project management and familiarity with programming languages such as python, R, or java. Protein structure visualization with PyMol or equivalent.

Ph.D. level Scientist needed

We are seeking someone with experience in Mammalian cell culture techniques with an emphasis on plasmid construction, transfection, protein expression/purification, and extraction of proteins from cellular membranes, SDS-PAGE, Western blots. Adherent and suspension cell culture methods. Ability to work in a fast-paced team-oriented environment is a must.

Project management a plus. Please direct inquiries for either job to eric.graban@quarrybio.com.

Oak Ridge National Laboratory Opportunities

Faculty Opportunities – Summer Research, Sabbatical Research Experiences

<https://orise.ornl.gov/ornl/faculty/default.html>

Postdoctoral Opportunities - <https://jobs.ornl.gov/>

National Development Council (NDC)

NDC seeks to hire part-time, graduate school level interns to assist NDC field staff in planning, implementing, and evaluating Multicultural Lending activities in the south Florida tri-county area – Broward, Dade and Palm Beach counties. We seek candidates who embrace our mission and have passion for community development work.

For more information, please visit: <https://ndconline.org/wp-content/uploads/2016/01/NDC-Fellow-Job-Description-Florida.pdf>

[Assistant Professor – Department of Health Outcomes and Biomedical Informatics](#)

University of Florida, Gainesville, FL

[Research Scientist/Engineer – Department of Psychology](#)

University of Washington, Seattle, WA

[Assistant Professor – Orchestral Conducting](#)

Sewanee University, Sewanee, TN

[Research Scientist – Public Health Research](#) (#495565)

NORC at the University of Chicago, Bethesda, MD

[Assistant Professor – College of Fine Arts](#)

Jacksonville University, Jacksonville, FL

[Research Scientist I](#) (Requisition ID: 26620)

Medical College of Wisconsin, Milwaukee, WI

[Assistant Professor of Geography- Department of Geology & Geography](#)

Georgia Southern University, Statesboro, GA

[Assistant Professor of Research – Center for Craniofacial Molecular Biology](#)

University of Southern California (USC), Biomedical Sciences

[Assistant Professor – Clinical Occupational Therapy](#)

University of Southern California, Occupational Therapy

[Assistant Professor – Research Emergency Medicine](#)

University of Southern California, Department of Emergency Medicine

[Clinical Assistant Professor – Pediatrics](#)

University of Southern California, Department of Pediatrics

Below is a sampling of open positions around the world -

Canada: [Assistant Clinical Professor – in Pharmacy & Pharmaceutical Science](#)

University of Alberta, Faculty of Pharmacy & Pharmaceutical Sciences

[Tenure Track Assistant Professor – Biomedical or Electrical Engineering](#)

University of Guelph, School of Engineering/Biomedical Engineering

[Assistant Professor – REHAB Occupational Therapy](#)

University of Alberta, Department of Occupational Therapy

[Assistant Professor – Microbial Science & Micro/Nanomaterials](#)

University of Calgary Canada First Research Excellence Fund

[Assistant Professor – Department of Medicine](#)

University of Alberta, Faculty of Medicine & Dentistry

[Assistant Professor – Division of Developmental Pediatrics](#)

University of Alberta, Faculty of Medicine & Dentistry

[Staff Scientist in Hematology Research](#)

Keenan Research Centre for Biomedical Research of St. Michael's Hospital

Japan: [Assistant Professor in the Graduate School of Biomedical & Health Sciences](#)

Hiroshima University, Graduate School of Biomedical & Health Sciences

[Assistant Professor in Medical Education, Pharmacology, Neuroscience](#)
Hiroshima University, Graduate School of Biomedical & Health Sciences

Norway: [Head Engineer at Electron Microscopy Core Facility](#)
University of Oslo, Department of Biosciences (IBV)

Singapore: [Assistant Professor for Bio-Behaviorist](#)
Duke NUS Medical School, Academic Medicine Research Institute

[Assistant Professor – Center for Aging Research & Education](#)
Duke NUS Medical School, Center for Aging Research & Education

South Africa: [Associate Researcher in Clinical Micro Infectious Diseases \(CMID\)](#)
Wits University, School of Pathology, Johannesburg, ZA

Click [here](#) for featured Biology careers

Subscribe to receive personalized job announcement emails:

[Bio Careers](#)

[Academic Keys](#)

[PhD Jobs](#)

[Fierce Biotech Jobs](#)

ASBMB - American Society for Biochemistry and Molecular Biology
<http://www.asbmb.org/careers/> (career information)

CAREER DEVELOPMENT WEBINARS AND BLOGS

[Teaching while introverted](#)

In this article, the author mentions the college classroom, it turns out, can be the ideal playground for those of us who identify as introverts.

[Before applying for your dream science job, Google thyself](#)

Read an article where the author shares tips for sanitizing your online presence

Webinar | [uncovering novel protein biomarkers in drug discovery and development: Targeting disease diagnosis and drug response monitoring](#)

Wednesday, February 19, 2020, 12 noon Eastern

Webinar | [deciphering immune-oncology: targeting cellular mechanisms of the tumor immune response](#) Wednesday, February 26, 2020, 12 noon Eastern

How to Be Proactive in Your Mentoring Relationships – National Postdoctoral Association
<http://www.nationalpostdoc.org/?page=Proactive>

[ASBMB - Postdoctoral Education & Resources](#)

Versatile PhD

This site helps graduate students and new PhD's identify, prepare for, and excel in possible non-academic careers.

[Click here](#) to learn more. [Click here](#) to join

Free NPA Membership

FSU is a sustaining member of the National Postdoctoral Association (NPA). This membership provides free affiliate membership to all FSU postdoctoral scholars. Benefits of joining the NPA include:

- ✓ A subscription to the NPA's official quarterly newsletter
- ✓ Reduced registration fees to the NPA Annual Meeting
- ✓ Eligibility for the NPA Travel Award Program
- ✓ Professional & Leadership Development
- ✓ Networking opportunities with colleagues nationwide

If you are interested in joining the National Postdoctoral Association, [click here](#).

Please email opda-info@fsu.edu if you encounter any problems.

For previous issues, [click here](#)!

If you want to unsubscribe from receiving any postdoc emails, please visit:
<https://lists.fsu.edu/mailman/listinfo/postdoc-careerprog>, scroll to bottom to unsubscribe.

