

SHARE PRICES 223.0 € +0.73 ↗

L'ORÉAL

[COMPANY](#) [BRANDS](#) [RESEARCH & INNOVATION](#) [SOCIAL RESPONSIBILITY](#) [CAREERS](#) [FOLLOW L'ORÉAL](#)

[L'Oréal](#) > [Our Commitments](#) > [L'Oréal USA For Women In Science Program](#)

L'ORÉAL USA FOR WOMEN IN SCIENCE



NIH **Blueprint**
for Neuroscience Research




HHMI's Hanna H. Gray Fellows Program



National Institutes of Health
Office of Extramural Research

SHARE PRICES 223.0 € +0.73 ↗


L'ORÉAL

COMPANY BRANDS RESEARCH & INNOVATION SOCIAL RESPONSIBILITY CAREERS  FOLLOW L'ORÉAL

L'Oréal > Cr Commitments > L'Oréal USA For Women in Science Program

L'ORÉAL USA FOR WOMEN IN SCIENCE

The L'Oréal USA For Women in Science fellowship program has awarded 75 postdoctoral women scientists nearly \$4 million in grants since 2003.



L'ORÉAL USA FOR WOMEN IN SCIENCE

- APPLY NOW
- PREVIOUS FELLOWS
- FREQUENTLY ASKED QUESTIONS
- CHANGING THE FACE OF STEM

The L'Oréal USA For Women in Science fellowship program has awarded 75 postdoctoral women scientists more than \$3.8 million in grants since 2003. [Text transcription of the video](#)

L'ORÉAL'S COMMITMENT TO SUPPORTING WOMEN IN SCIENCE

Women only make up 24 percent of STEM workers in the United States, only 14 percent of the country's engineers and 27 percent of computer science professionals. Without appropriate female representation, the potential STEM innovations of tomorrow will be missing half of the talent in our world.

L'ORÉAL USA FOR WOMEN IN SCIENCE



Five women postdoctoral scientists annually

\$60,000 and commitment to serving as role models for younger generations.

Made 75 Awards than \$3.8 million in grants since 2003.

Administered by AAAS

Completed applications are due January or February.
Award will be announced October 2019.



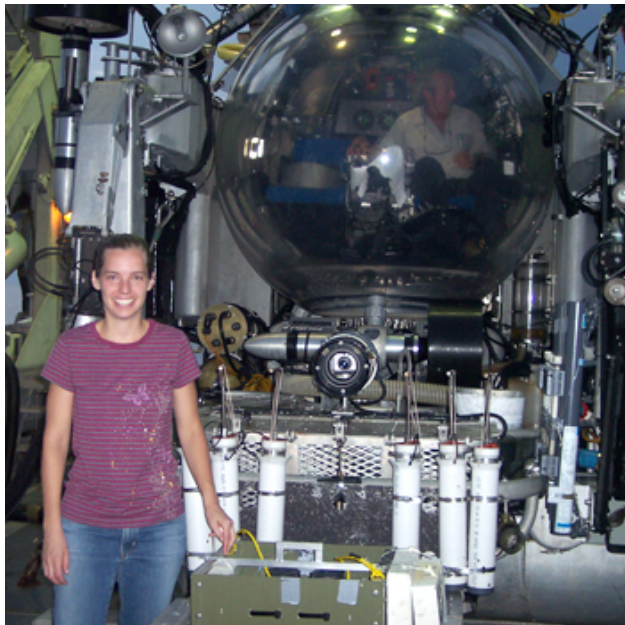
Postdoctoral researcher throughout the fellowship year

American born, naturalized citizen or permanent resident

U.S. based academic or research institution

Must commit to at least twenty hours of activity in support of women and girls in science (e.g. mentoring, classroom visits, media, events)

Laura Lapham, Ph.D.
Associate Professor
Chesapeake Biological Laboratory
University of Maryland



*Postdoc with Jeff Chanton
.....use novel seafloor
instruments to obtain in situ
methane concentrations and
study in situ processes.*

photo: Jeff Chanton, FSU Department of
Oceanography)



THE FLORIDA STATE UNIVERSITY

Stacey Halpern, PhD
Associate Professor
Biology
College of Arts & Sciences
Pacific University, OR



*Postdoc with Nora Underwood in Biology.
.....understanding the factors that control plant
population size, important in addressing environmental
and economic problems created by invasive and weedy
species.*



THE FLORIDA STATE UNIVERSITY

F99/K00 [PA-18-398](#)

- NIH Blueprint Diversity Specialized Predoctoral to Postdoctoral Advancement in Neuroscience (D-SPAN) Award (F99/K00)
- 15 Institutes, Centers, Office
- 1-2 years as late-stage PhD student - transition
- 4 years mentored postdoc
- April & Dec Deadlines



NIH **Blueprint**
for Neuroscience Research

F99/K00 [PA-18-398](#)

- (D-SPAN) Award (F99/K00)
- PhD student – NRSA Salary level + \$1000 travel to Blue Print Conference
- Postdoc - \$50,000 + \$3000 allowable costs + \$1000 travel to Blue Print Conference
- Citizens, Permanent Residences
- April & Dec Deadlines



NIH **Blueprint**
for Neuroscience Research

F99/K00 [PA-18-398](#)

- **Specific Aims:**
- *Aim 1:* The Dissertation Research Project: Progress thus far
- *Aim 2:* The Dissertation Research Project: Work to be completed during the F99 award period
- *Aim 3:* The Postdoctoral Research Direction - include technical and career development skills to be acquired; mentor need not be identified.

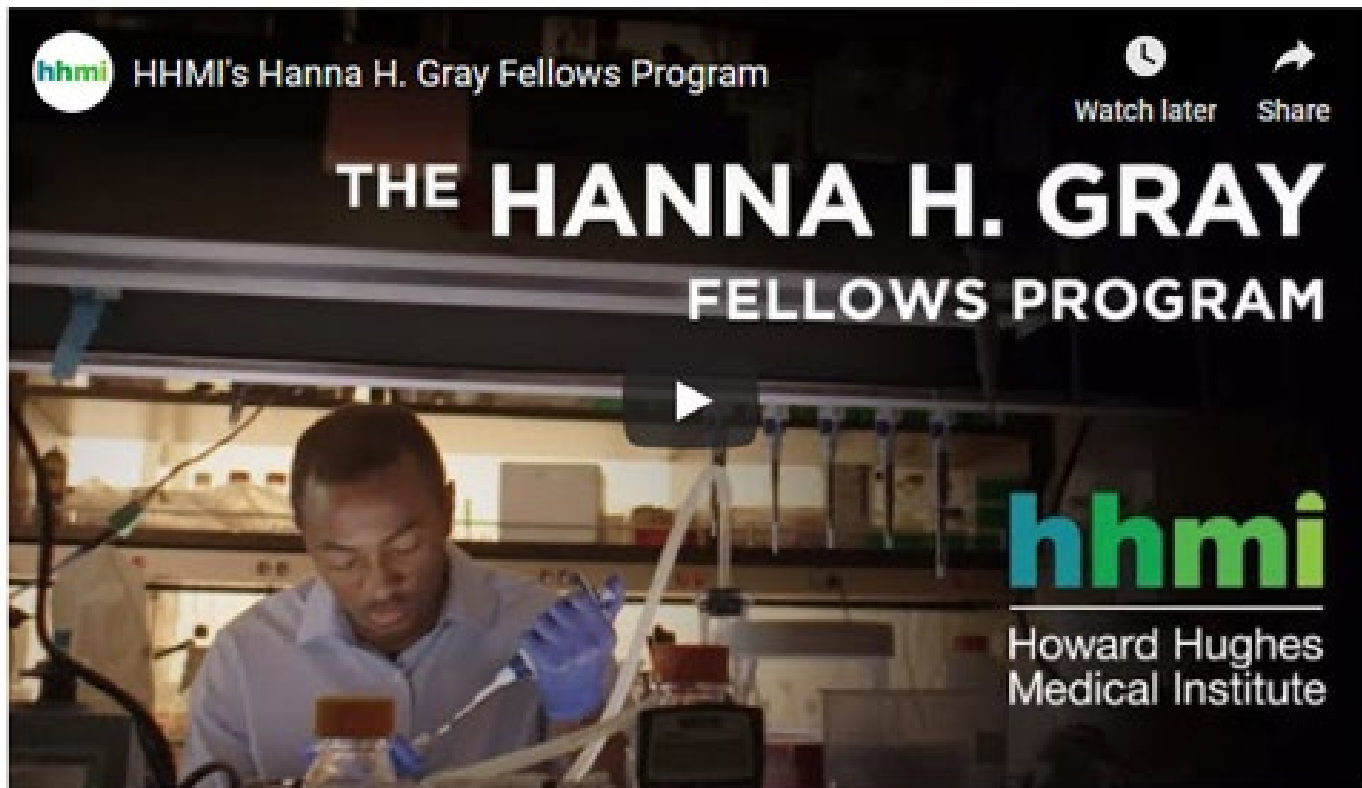


NIH **Blueprint**
for Neuroscience Research

- **Research Supplements to Promote Diversity in Health-Related Research**
- **[PA-18-906](#)**
- **25 Institutes, Centers and Offices**
- **R, U, P, D, G, SC Eligible Parent Codes**
- **Must be aligned with Parent Grant from Institute**
- **Goals, Funding caps, Level, Requirements institute specific**
- **PI CONTACT PROGRAM OFFICER**

Hanna H. Gray Fellows Program

The Hanna H. Gray Fellows Program supports early career life scientists in academic labs across the U.S.

[Overview](#)[Eligibility](#)[Application](#)[Award](#)[Fellows](#)

Hanna H. Gray Fellows Program

- **Components of the Application**
- Applicant's educational and training record
- Personal statement experiences and career goals
- Overview prior research experience
- A list of publications with statements of significance
- Summary of planned research for postdoctoral phase

Dates

- **January 9, 2019:**
Applications due
- **January 16, 2019:**
Mentor and reference letters due
- **Late April 2019:**
Notification of status
- **June 23-25, 2019:**
Finalist symposium
- **Late June 2019:**
Notification of awardees
- **Mid-July 2019:**
Intent to accept award due

Hanna H. Gray Fellows Program

- **Components of the Application**
- An evaluative statement provided by the applicant's research training mentor
- A statement of support with a training plan provided by the postdoctoral training mentor
- A curriculum vitae and list of prior trainees provided by the postdoctoral training mentor

Dates

- **January 9, 2019:**
Applications due
- **January 16, 2019:**
Mentor and reference letters due
- **Late April 2019:**
Notification of status
- **June 23–25, 2019:**
Finalist symposium
- **Late June 2019:**
Notification of awardees
- **Mid-July 2019:**
Intent to accept award due